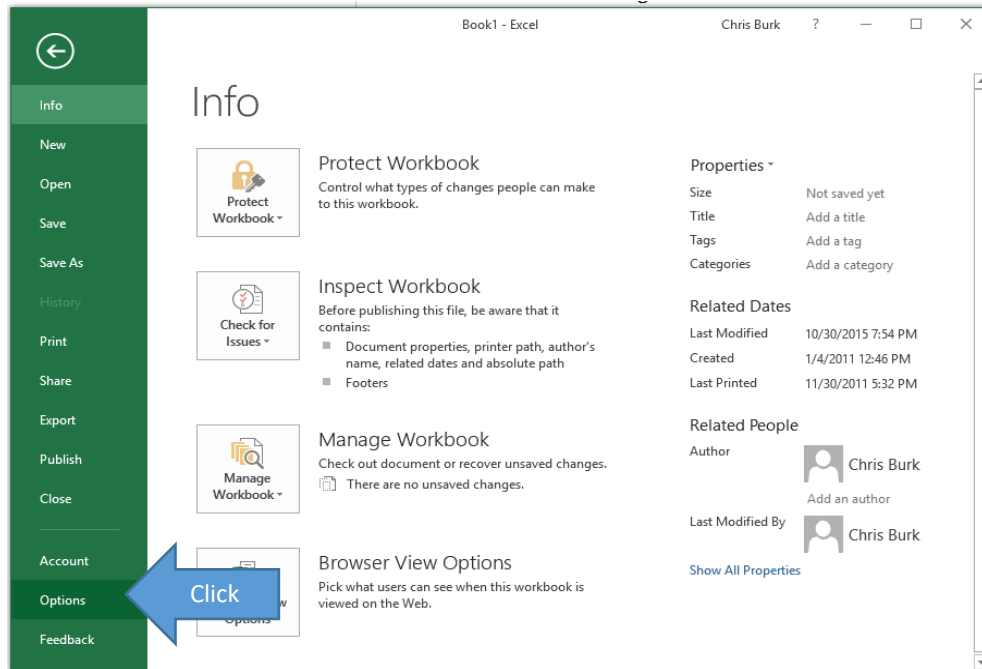


PROCESS | UTILITIES

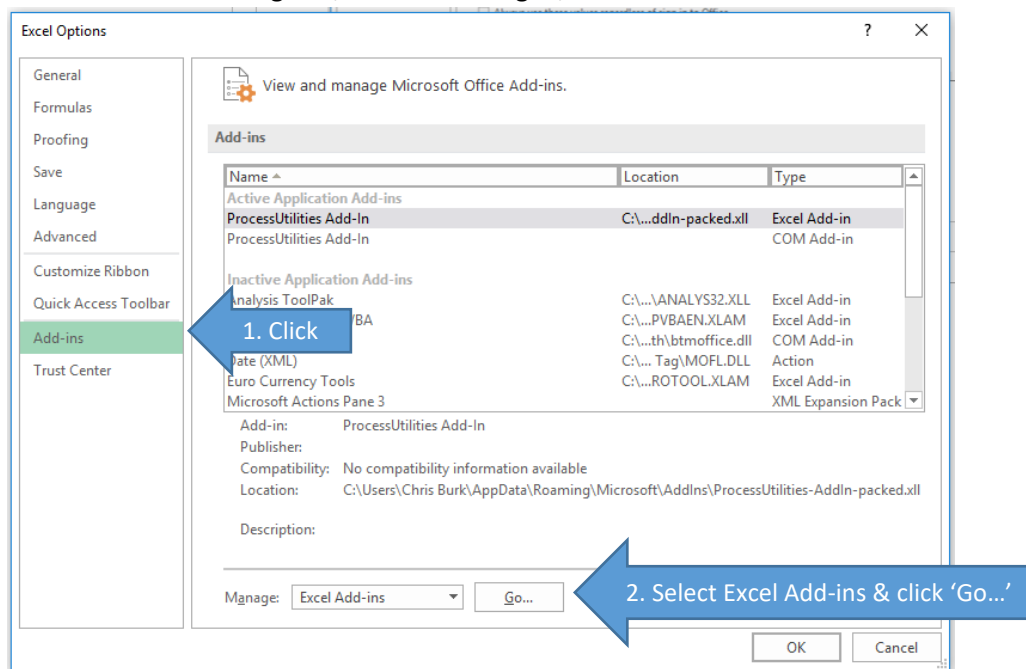
Installation instructions

The distribution files for Process Utilities include both 32-bit and 64-bit versions. The version you install should match your version of Office. Note that 32-bit Office is most common, even on 64-bit machines. To check which version you have installed, click on **File >> Account >> About Excel**.

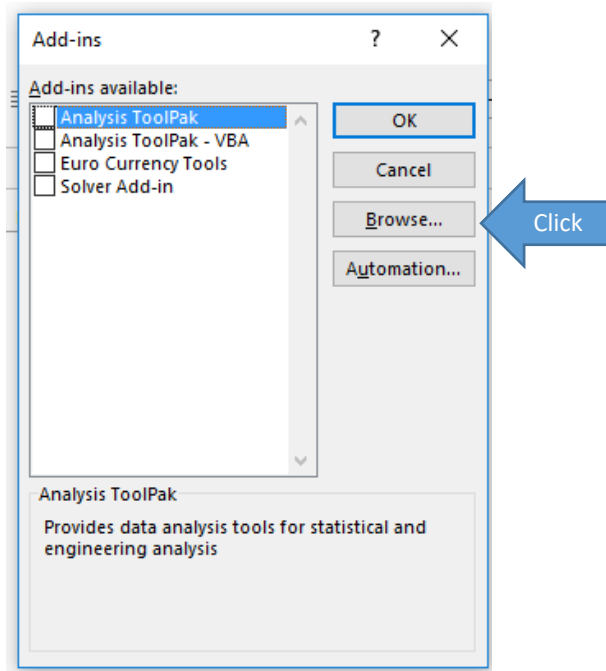
Click on the **File** tab in Excel 2010/2013/2016, or click on the **Office Button** in Excel 2007, and click **Options**:



Select **Add-ins**. At the bottom of the dialog box, next to 'Manage:', select **Excel Add-ins** and click **Go...**

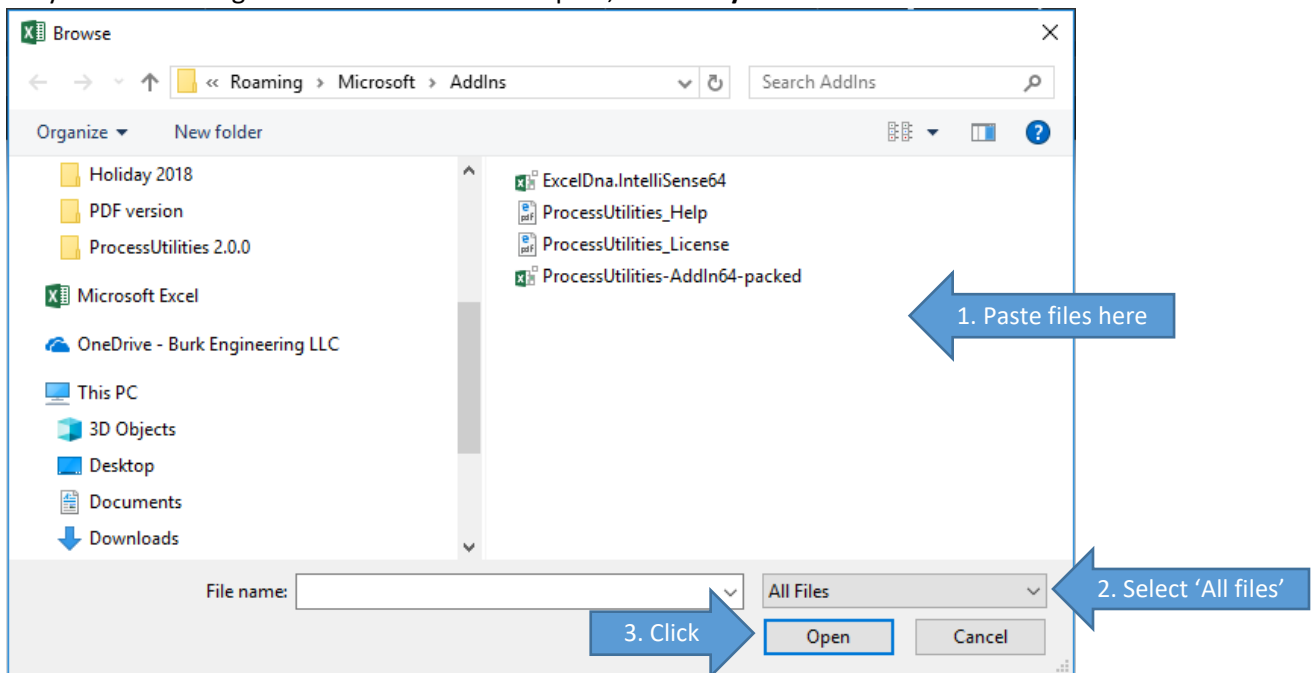


Click on **Browse...**



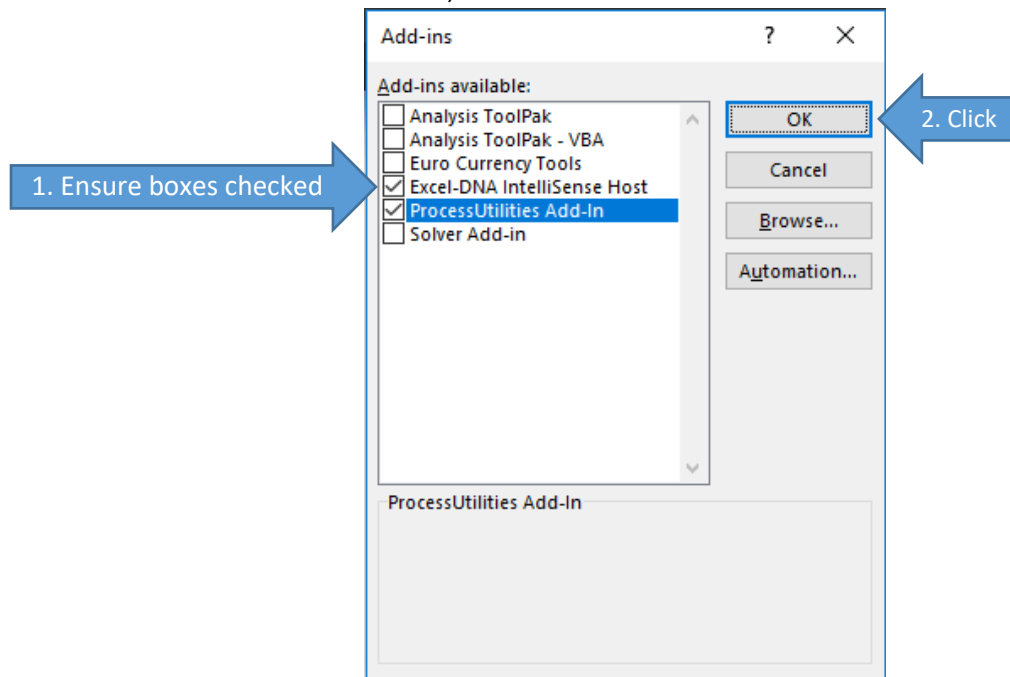
The AddIns folder should now be open, as shown below. Into this folder, copy and paste all four files in ProcessUtilities distribution folder corresponding to your version of Excel (32- or 64-bit). The four files are the ExcelDna Intellisense Add-in, the ProcessUtilities Help, the ProcessUtilities License, and the ProcessUtilities Add-in.

Note that you will need to select **All Files** to see that 'ProcessUtilities_Help' and 'ProcessUtilities_License' have been copied successfully. After checking that all files have been copied, click **Okay**.



Look to make sure that you see both 'ProcessUtilities Add-in' and 'Excel-DNA IntelliSense Host' in the Add-ins list as shown below. If you don't, repeat the last step, highlighting the file that was not visible before clicking on 'Open'.

When both files are visible in the Add-ins list, ensure that the boxes next to each are checked and click **Okay**.



ProcessUtilities should now be installed. If you have problems, don't hesitate to email support@ProcessUtilities.com.